



DESIGNER CORK

718-412-9040

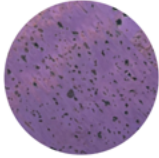
www.SampsonMills.com



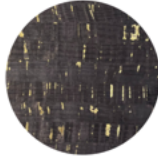
Combine any 2 colors or same colors front and back



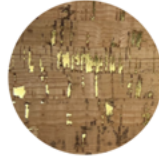
Surface
Light Brown



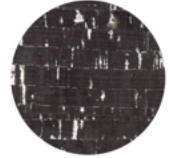
Surface
Violet



Natural Black
W/Gold



Natural
W/Gold



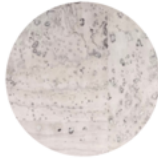
Natural Black
W/Silver



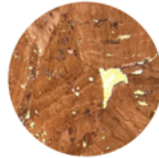
Natural



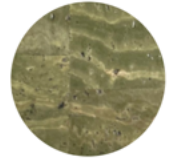
Surface
Denim Blue



Surface
White



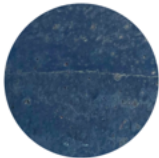
Glossy Marble
Bronze



Surface
Army Green



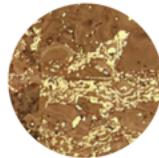
Natural
W/Silver



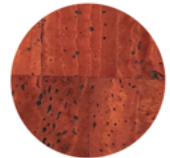
Surface
Navy Blue



Glossy Marble
Charcoal Gray



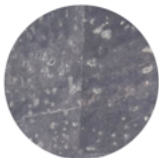
Emerald
W/Gold



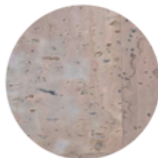
Surface
Brick



Pearl
Rose Gold



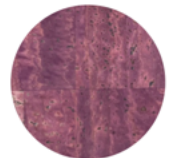
Surface
Charcoal Gray



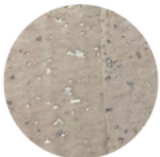
Surface
Gray



Glossy Marble
Cream



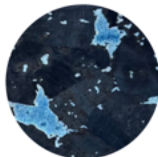
Surface
Purple



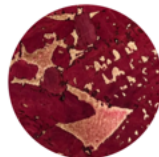
Pearl
White



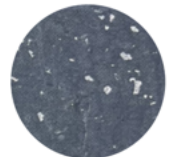
Surface
Pearl Blue



Marble
Navy Blue



Glossy Marble
Wine



Pearl
Charcoal Gray

COLOR PALETTE



CORK

718-412-9040
www.SampsonMills.com



WHY USE CORK?

- Sustainability:
 - Biodegradable and produced from renewable resources.
- Durable:
 - Inherently abrasion & scratch resistant
- Waterproof:
 - Naturally Waterproof & stain-resistant
- Warm and Soft to Touch
 - Cork is pleasant to the touch, Anti Static, & has hypoallergenic properties.
- Reduce Greenhouse Effect
 - Cork oak forests retain up to 14 million tons of CO2
- Vegan
 - Harvesting cork helps increase the trees life expectancy & the ecosystem where trees grow.

The cork can be ordered with any 2 colors back to back.

Due to the vulcanization process, the front cork forms a permanent bond with the back cork providing strength, resilience, and stability without the need for harmful chemical bonding.



Cleaning Info



Digital Database



CORK CLEANING

718-412-9040
www.SampsonMills.com



The best way to keep cork looking great is through proper maintenance and regular cleaning to prevent excessive dirt from accumulating. To help keep your quality cork leather looking its best, we recommend that you do the following to extend the life of the cork leather:



- Wipe up spills and smudges of dirt as soon as they occur.
- Clean with soap and water / Apply a light solution of water add mild soap using a soft cloth clean from seam to seam. **Do not scrub with a hard brush.**
- For stubborn stains like ink, blot with isopropyl alcohol as soon as possible.
- Thoroughly rinse all solution residue with clean water.
- Air dry.

Though not all stains are guaranteed to be removed the sooner you remove them the better.

Please use all cleaning agents safely and as instructed.

The use of other cleaning agents, disinfectants, conditioners or protectants is not recommended as they can degrade the Cork's performance.



718-412-9040
www.SampsonMills.com



CORK TECHNICAL INFORMATION

GENERAL INFORMATION:

Composition:

- For Panels and baffles
 - 100% Cork
- For Walls and Upholstry
 - Front: 100% Cork
 - Backing: 30% Cotton, 70% Polyester
 - Thickness: 0.9 mm (+/- 0.5mm)
 - Roll Width: (55") 1400 mm (+/- 5 mm)

Performance

- Abrasion: 120,000+cycles Martindale
 - ISO 5470-2
- Tear Strength: 1.8 / 2.0 kg
 - ISO 17696:2004
- Tensile Strength: 60/50 kg/cm
 - ISO 17706:2003
- Breaking Strength: 20/15%
 - ISO 1776:2003
- Water Permeability: 0%
 - ISO 17702:2003

Color Fastness

- UV Resistant: 3(Blue Scale) ISO 105-B02:1999
- Crocking dry: ISO 17700:2004
- Crocking Wet: ISO 4 / ISO 3 / ISO 105-B-02:1999

Flammability

- Cigarette: Pass/BS852:2006
- Cal-117: Pass